

Physician & Physician Self-Guided Collection Instructions.

Two bags are provided. One with Sample Collection Kit Instructions/ and one with a sanitizing product.

Open kit package. Remove the swab, the tube and sanitizing wipe. Set the tube and sanitizing wipe aside before beginning instructions below to collect the specimen requested by your health-care provider.

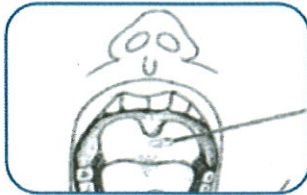
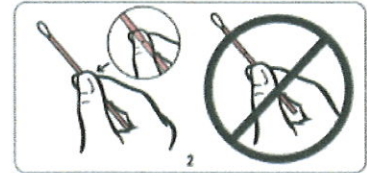
WARNING: If at any time the contents of the tube are spilled on your skin, wash the affected area with soap and water. If the contents of the tube are splashed in your eyes, immediately flush your eyes with water.

1. Partially peel open the swab package as shown in Diagram.



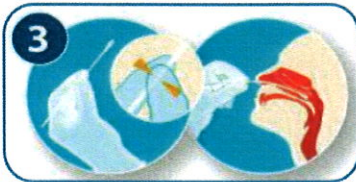
***** Remove the swab. Do not touch the soft tip or lay the swab down. If the soft tip is touched, the swab is laid down, or the swab is dropped, request a new Multitest Swab Specimen Collection Kit.

2. Hold the swab in your hand as shown in Diagram 2, placing your thumb and forefinger in the middle of the swab shaft covering the score line (black line). Do not hold the swab shaft below the score line (black line).



Throat

3. Throat. Tilt head back, breathe deeply and say "AHHH". Guide the swab over the tongue, into the back of the throat. (Posterior pharynx). Avoid touching your tongue, teeth, roof of mouth, or cheeks. Carefully but firmly rub the swab over the tonsils (or tonsillar crypts if tonsils have been removed) in the back of the throat.

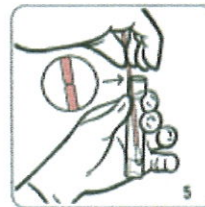


Or

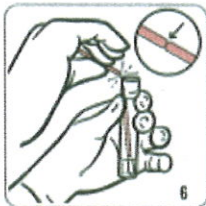
Nasal

3. Nasal Tilt head back 70 degrees, hold swab with fingers below the score line. Gently insert swab into the nostril along the septum floor of the nose extending straight back until resistance is reached. Rotate the swab several times and then hold in place for five seconds to absorb the material.

4. While holding the swab in the same hand, unscrew the cap from the tube as shown in Diagram 4. Do not spill the contents of the tube. If the contents of the tube are spilled, request a new Multitest Swab Specimen Collection Kit.



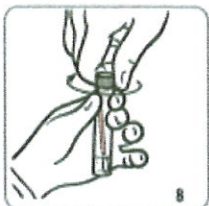
5. Immediately place the swab into the transport tube so that the score line (black line) is at the top of the tube as shown in Diagram 5.



6. Carefully break the swab shaft at the score line (black line) against the side of the tube as shown in Diagram 6.



7. Place top portion of the swab shaft as shown in Diagram 7. Dispose of top of shaft appropriately.



8. Tightly screw the cap onto the tube as shown in Diagram.

9. Wipe tube with alcohol wipe provided.

10. Return the tube as instructed by your health-care provider.